

# Master of *The Vedic Chart*

Joseph Campbell is probably best known for the *Power of Myth* television series, with journalist Bill Moyers, released in 1988.<sup>1</sup> Anyone who has ever seen this series can testify to the depth of Campbell's intellect and spiritual vision — and his gift for storytelling. He was a master at synthesizing the various world mythologies and revealing their similarities which, he believed, ultimately speak to the unity and interconnection of the human race. It was his appearance on the *Power of Myth* shows that inspired me to research both the public and private lives of Joseph Campbell; what I discovered was fascinating, but not unexpected. Exceptional people lead exceptional lives, and Joseph Campbell was no exception to this rule! With the help of the biography, *A Fire in the Mind: The Life of Joseph Campbell*,<sup>2</sup> I was able to discover many details about Campbell's personality as well as the dates of specific events in his life. One of the most exciting things for me, as a student of Vedic astrology, was the amazing correlation I found between Campbell's Vedic chart and the particulars of his actual life. This article is a look at some of these connections.

# Myth of Joseph Campbell

by Fred Kendal Abong

## A Short Biography

Joseph Campbell was born in 1904 in New York City (Rahu, which I like to call the "New York City" planet, with its connection to insatiable worldly desires, is in Campbell's Ascendant). He began at an early age to show interest in stories of American Indians and other mythologies. He was especially fond of the exhibits at the Museum of Natural History in New York and demonstrated a precocious intellect and a voracious appetite for knowledge. He attended private Catholic schools as a boy and later attended Columbia University where he received a master's degree with a focus on medieval literature. After graduation and further studies abroad, Campbell spent time traveling and experiencing life until, at age 34, he accepted a position in the literature department of Sarah Lawrence College. He remained at the college for the next 38 years, splitting his time between his personal literary goals and his duties as a college professor. Later in life, Campbell kept very busy giving lectures and working on several major mythological texts. From 1985 to

1987, he participated in a series of interviews with journalist Bill Moyers, which explored Campbell's vast knowledge of mythology and the relationship and importance of these myths to the human experience. This series, titled *The Power of Myth*, was released to great acclaim in 1988. However, Campbell was never able to enjoy the praise; he died in 1987 of complications from esophageal cancer.

## Spiritual Thought and Myths

Almost every story Campbell ever told and almost every myth that he recounted had, in his view, a spiritual message to communicate. He was brilliant in bypassing the more mundane, literal interpretations of these stories; instead, he revealed the wisdom they held about our human potential. Self-awareness, reincarnation, religion versus spirituality, the concept of duality, and nearly every other topic connected to personal enlightenment were thoroughly explored in Campbell's lectures and books. Planetary combinations in his Vedic chart reflect his great concern with



## Master of Myth

what the Hindus call *moksha*, or enlightenment. (See **Chart**, opposite.)

The Sun (leadership), as ruler of the 12th house of spirituality, is in an exact conjunction with Mercury (knowledge and communication) and Jupiter (teachers and religion or spirituality), strongly suggesting that Campbell's life would be that of the way-shower. The 1st- and 10th-house ruler, Mercury, conjunct the 12th lord (the Sun) indicates that Campbell was himself very spiritual and that his career would be connected to consciousness-raising. Mercury's conjunction to Jupiter also shows that Campbell might be very religious. Indeed, he was, having been raised a Catholic and attending Catholic schools as a youngster, but as he grew into a young man, he eventually renounced all his religious ties. (The reason for this is explained in the section on planetary war.)

The preponderance of already spiritually charged planets in soul-surrendering Pisces (metaphysical 8th-house ruler Mars and spiritual Ketu are also placed in this sign) gave rise to Campbell's sensitivity to the unity inherent in the universe, making him somewhat of a mystic. He used the language of our collective unconscious — myths and symbols — often quite poetically, to communicate and reveal the connections that we humans share. He stressed the importance of myths for helping us to understand our own processes. In *The Art of Reading Myths*, Campbell states: "Myth is related to dream as the deeper zones of the sea to the shallows. In myth, as in a dream, it is the secret of the inner world that comes to us ..."

### "A Fire in the Mind"

Factors indicating intellectual brilliance are everywhere in Campbell's chart, but the planetary combination that I find most indicative of a "fiery" mind is the incredibly tight conjunction of the Sun and Mercury in the 7th house. The Sun, the literal planet of fire, and Mercury, the planet of the rational mind, share the same degree, separated by a mere 8 minutes. Mercury, a very muta-

### Campbell stressed the importance of myths for helping us to understand our own processes.

ble planet, tends to take on the characteristics of the planets it is in association with, so in its close union with the Sun, it heats up and blazes away. People with tight Sun-Mercury conjunctions often possess encyclopedic minds and strong communication skills. In Campbell's case, he had a vast, intimate knowledge of the world's mythologies, among other things, and was well known and highly sought after for his inspiring lectures. This Sun-Mercury combination is further strengthened because it occurs in the angular, or *kendra*, 7th house of relationships; this also suggests Campbell's wonderful ability to communicate person to person.

Along with the intense Mercury described above, Campbell also had a powerful 5th house, the house of innate creative intelligence. Saturn, the lord of the 5th, is in that house, strengthening both the planet and the house and bringing focus, depth, and perseverance (Saturn) to the workings of the mind. The discipline created by this placement helped Campbell to achieve his more daunting intellectual tasks, such as his contribution to the "decoding" of James Joyce's *Finnegans Wake*,<sup>4</sup> titled, *A Skeleton Key to Finnegans Wake*.<sup>5</sup> The thoroughness of Saturn also aided Campbell in the extensive historical, mythological, and anthropological research he undertook for his many tomes on mythology.

Another factor worth mentioning is the placement of the Moon in Campbell's chart. In Hindu astrology, the Moon represents the commonsense mind and memory and, when well placed, gives balance and evenness to a person's thinking. Campbell's Moon is in Cancer, its own sign, in the 11th house where it aspects the 5th house and is in mutual aspect with the 5th-house lord, Saturn — that is, both planets aspect each other completely, or with full strength. The Moon's aspect into the 5th lights up Campbell's intelli-

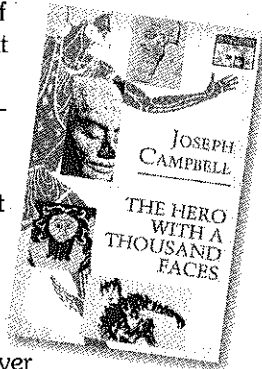
gence, and its connection to Saturn gives further depth and seriousness to his mind. Since Saturn rules the 5th house of *poorvapunya*, or past-life credit, this indicates that Campbell was getting the beneficial results in this life from work or efforts made in previous incarnations toward the strengthening of his intellect. Also, a close aspect from Jupiter to the Moon in Jupiter's exaltation sign, Cancer, expands and broadens Campbell's mind, providing an excellent balance for the more focused but sometimes narrow Saturnian influence.

### Combustion and Kazimi

On a technical note, planets close to the Sun become "combust" by the Sun's rays, and either their natural significations or the issues of the houses they rule are severely damaged. However, there is a condition known as *kazimi* (also spelled "cazimi") where, according to some astrologers, a planet sharing the exact degree of the Sun (within 17 minutes of arc) is not harmed by the Sun's rays, and its qualities are instead magnified and glorified. It's as though these planets are one with the life-giving force of the Sun and become supercharged versions of their "normal" selves. Campbell's dexterity with the written and spoken word certainly reflects a souped-up, *kazimi* Mercury.

In Campbell's chart, Mercury rules the 1st house of the physical body and the 10th house of career or status. It does appear that the Mercury combustion was detrimental to his career, because it took a while for Campbell to find his niche. After finally accepting that he would never be a successful fiction writer, he was well into his forties before he started on the path toward his greatest work in mythology, *The Hero with a Thousand Faces*.<sup>6</sup> And this work wasn't actually published until Campbell was 48.

The Sun's burning effect also took its toll on Campbell's physical body, mainly during the Mercury periods (*dasha* and *bhuktis*) when he often felt drained of



♂ 29°28'	7	8	9	10
♃ 13°42'				
♄ 13°32'				
♅ 13°24'				
♆ 04°57'				
♀ 16°29'	6	Joseph Campbell Lahiri ayanamsha		♁ 11°10'
♁ 25°11'	5			♂ 12
♂ 04°57'		3	2	♁ 04°57'
♁ 28°16'	4			♁ 28°16'

vitality and sometimes became ill. In fact, it was during a Mercury *bhukti* in 1987 that Campbell lost his battle with cancer and died. However, in spite of the afflictions to Mercury, Campbell enjoyed a robust physicality and overall good health. This is due to the energizing effect of all the planets in the 7th house aspecting the 1st house, as well as to the strength of Campbell's 6th house of health, which is extremely strong (see the section in this article titled "The Athlete").

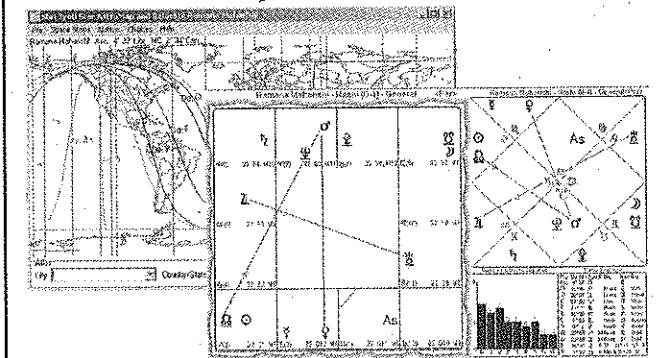
### Neechabanga and Planetary War

Campbell's Mercury is in a special state (*kazimi*), but it is also in Pisces, the sign of its debilitation. However, this Mercury gains cancellation of debilitation, or *Neechabanga*, by the placement of Jupiter in Pisces, the sign it rules. *Neechabanga* in a chart never really eliminates or removes the problems of a fallen planet. Rather, it is more of an alleviating factor, softening some of the problems associated with debilitation. For Campbell, the real boost to the debilitated (*neecha*) Mercury comes from its victory over Jupiter in a planetary war.

Although Jupiter is in *kazimi* with the Sun as well, and therefore magnified, it is also in a situation known as "planetary war" with Mercury. Planetary war occurs when two or more planets (excluding the Sun and Moon) occupy the same degree and "battle" for dominance. Some argue that the planet higher in the degree (e.g., 13°42') wins the war; others say the planet lower in the degree (e.g., 13°32'). Whichever planet does win becomes very powerful (how it becomes powerful depends on the nature of the planets at war), and the planet that loses becomes greatly weakened. From Campbell's chart, I would favor the idea of the lower-degree planet (Mercury) becoming the victor, and here are my reasons.

If Mercury were to lose the war, then Mercury's indications, naturally and by house rulership, would be harmed. We already know that Campbell's intellect was unquestionably sound. But what about the houses ruled by Mercury,

"Pure Genius!" - Hart deFouw  
**Shri Jyoti Star**  
 the Vedic software  
 by Andrew Foss  
 New Version 5



Free Upgrades  
**Oracle and Instant Prashna**  
 Video & Text Tutorials  
**Unique AstroMapping even for Couples**  
 Planetarium and Fixed Stars  
**Vedic, Tajik & Western Aspect Lines**  
 For Western and Vedic Astrologers  
**Unique Compatibility Techniques**  
 User Friendly, Fun, Beautiful  
**Powerful Research Features**  
 Latest ACS Atlas Data  
**Used by the top Jyotishis**  
 and Much Much More!

"I use it and recommend it to my students."  
 - Dr David Frawley  
 "Tremendous value ... My highest recommendation."  
 - The Mountain Astrologer

10% discount if you order now, only \$269. FREE demo at  
[www.VedicSoftware.com](http://www.VedicSoftware.com)  
 call Andrew tollfree on 1-877-484-SHRI (7474)

bill kent  
 graduate gemologist

[www.jyotishgem.com](http://www.jyotishgem.com)

specialist in unheated, untreated blue and yellow sapphires

## Master of Myth

the 1st and 10th? With regard to the 1st house, Campbell seemed to have great self-confidence, although he was humble and kind, and he had no problems gaining recognition from others. Quite the opposite: All who met him were immediately impressed by his unique personality and presence. As for the 10th house, Campbell was highly esteemed in his career and later gained a certain level of fame and status. Any damage done to these houses is more likely attributed to the aspects Mercury receives from Saturn, Mars, and Ketu and to Mercury's combustion with the Sun (as explained previously).

In my opinion, Jupiter seems to have lost the war with Mercury; this is evidenced by the fact that Campbell never had children (Jupiter), never owned his own home (Jupiter as 4th-house ruler), and never made a great deal of money (Jupiter as signifier of

**Campbell's dexterity with the written and spoken word certainly reflects a souped-up, kaziimi Mercury.**

wealth). Also, after great introspection, Campbell severed his ties to traditional religion (Jupiter) in favor of a more universal, spiritual understanding of life.

### The Maverick

Campbell always considered himself to be an independent and trailblazing maverick of sorts, asserting that there was no "purpose" to life other than the *experience* of being alive. This image of the untamed maverick is, to me, best represented by a planet that is not used in traditional Hindu astrology — the unconventional Uranus. In Campbell's Western chart, the Sun, Mercury, and Jupiter all square Uranus. This indicates individual, intellectual,

and spiritual originality and perhaps even genius. Some Vedic astrologers draw parallels between the shadow planet Rahu and Uranus (an idea that I support), and Campbell's Rahu is in his 1st house of the self. Rahu here would transmit the unpredictable intensity associated with Uranus as well as the Uranian tendency toward the unusual or eccentric: Campbell was definitely his own, intense person.

### The Athlete

Joseph Campbell was more than six feet tall and solidly built: In his Vedic chart, Jupiter conjunct the *lagna* (Ascendant) lord, Mercury, and aspecting the 1st house gives a large physical body. He was a fearsome competitor in his youth, both in the gymnasium boxing ring and as star anchor on the Columbia University relay team. The astrological indicators of athletic ability and powers of intimidation can be found in a few places in Campbell's Vedic chart, starting with the 1st-house placement of Rahu. Rahu is an entity that brings an unpredictable intensity to whatever

house it occupies. In the 1st house, Rahu is a powerful presence, especially if it is in a favorable sign. Campbell's Rahu is in Virgo, considered by many Hindu astrologers to be the exaltation sign of Rahu; therefore, Campbell could be somewhat imposing, even when relaxed. This ability to intimidate others went a long way in psyching out rival relay runners, and Campbell, at one point, had the reputation of being the one to watch out for on the track.

The other factors contributing to Campbell's athletic prowess are the strengths of both the 5th and 6th houses in his chart. Vedic astrologers use the 5th as the house of sports in general and the 6th as the house indicating one's ability to overcome enemies or competitors. The lord of the 6th house, Saturn, is in the 5th house of past-life credit, showing the gift of being victorious over others or (in a sense) having no real enemies. Saturn also rules the 5th house; its placement there gives endurance and perseverance in athletic competition. (Campbell often came from behind to claim the victory.)

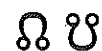
**Mercury periods would always be problematic for Campbell's health because of this planet's debilitation.**

Besides these placements, Campbell's *yogakaraka* planet, Venus, is in the 6th house, adding even further power to his skill in overtaking others. (The *yogakaraka* planet is the union indicator, or the best planet for a specific Ascendant, due to its rulership of auspicious houses — in Campbell's case, the 2nd and the 9th.) The benefic influence of Venus in the 6th house shows that, even though Campbell played to win, he would still be well-liked and respected as a good sportsman, which he was. The weakness of Mars, the planet of aggression and conflict as well as athletes, in the final degree of Pisces also reflected Campbell's love of sport for sport's sake, rather than for the thrill of beating others.

### The Teacher

Beginning in 1934, Campbell signed on as a professor at Sarah Lawrence, a women's college in New York, where he would remain for almost 40 years. Sarah Lawrence College was conceived as an experimental university geared toward exploring new methods of education, where the students were as responsible for their learning and curriculum as the teachers were. This kind of progressive position was just what Campbell was looking for, and from his chart, we can see that a teaching career was a strong possibility.

The 6th house relates to one's daily job (in Vedic, as in Western astrology), and the sign on this house in Campbell's chart is forward-thinking, humanitarian Aquarius. Campbell has Venus in his 6th house, which (for Virgo Ascendants) rules both the 2nd and 9th houses of education; the 2nd house relates to teaching, and the 9th, to higher education. These are fairly clear markers that Campbell's daily work (6th house) would involve teaching at the upper levels, possibly to females (Venus). Perhaps



## Lunar Nodes Californian Retreat with Komilla Sutton

Author *Lunar Nodes- Crisis and Redemption* and other books Karma, psychology, past life, spirituality, destiny vs. free will, emotional shadows, nodes and happiness, karmic relationships, mythology, identifying with the soul and its desires, the timing of the nodal experiences, eclipses, transits, kundalini, healing and more

*The Most Detailed and Comprehensive Study of the Nodes from a Vedic Perspective*

**14 to 21 October 2004**

**The IONS Retreat and Learning Centre, Petaluma, California**

The Retreat Center is just 30 minutes north of the Golden Gate Bridge, San Francisco. It is set on 200 acres of beautiful rolling hills, live oak woodlands & hiking trails.

Info: 74 Saxon Way Close, Romsey, Hampshire SO51 5RH, UK,

Tel: +44 (0) 1794 524178

Email: Komilla.Sutton@btinternet.com

**www.Komilla.com**

## Boulder, Colorado

First International ACVA Sponsored  
Vedic Astrology Conference  
In The Rocky Mountains



**August 4th - 8th 2004**

### Boulder Marriott

2600 Canyon Blvd. Boulder, CO 80302  
For Reservations Call Toll Free 1-888-238-2178

1-Track In Depth Classes Taught By  
Internationally Known Vedic Astrologers

Hosted By: *Christina Collins Hill*

www.vedicastrologer.cc • email jyotish@indra.com

**303-774-1999**

**Toll Free 1-888-JYOTISH**

Noted Speakers: Chakrapani Ullal, William LeVacy - Los Angeles, CA  
Dennis M. Harness, Ph.D. - Sedona, AZ - Dr. David Frawley - Sante Fe, NM  
Dennis Flaherty - Seattle, WA  
Christina Collins Hill, Kuntal Rawal, Dr. Terry Briggs - Denver, CO  
Komilla Sutton - London, England

## EXPRESS STAR TELLER magazine



India's Largest Vedic Astrological Monthly

**Let a Vedic Astrologer enter your house every month!**

Each issue includes articles...

- For the Beginner or Scholar
- Dashes, Vargas, Transits, Vasut & Nadi Granthas
- Mantra Yantra Tantra
- Remedies to improve Planetary Influences & Navagraha Shanti
- Mundane or World Predictions
- Monthly predictions based on your Moon Sign & Birth Star and much, much more...

Subscriber's are entitled to FREE CONSULTATIONS and REMEDIES throughout their subscription as well as 1yr, 2yr or 3yr PREDICTION / FORECAST!!!

Subscription Rates: 12 issues \$35 • 24 issues \$65 • 36 issues \$95

Mail your check to 752 N Jacob Miller Rd., Port Townsend, WA 98368

**Call 206.295.4791 or 360.385.5229**

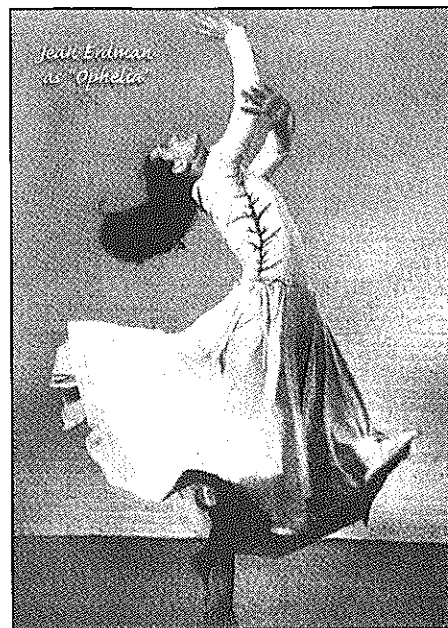
Sample our magazinE at:  
**www.starteller.com**

## Master of Myth

he stayed at Sarah Lawrence for so long because he was basically happy (Venus) there, and this may have been a blessing from past-life activity (the 6th-house ruler, Saturn, in the 5th house of credit from past lives).

### Marriage

Job satisfaction was not the only blessing Campbell enjoyed at Sarah Lawrence. Early in his career, he was also lucky enough to find love there. A student at the school, Jean Erdman, began private studies with Campbell; this eventually led to an affair and later to marriage, which lasted until his death at the age of 83. Jean was twelve years younger than Campbell and became a renowned dancer by profession, studying and touring with the famed Martha Graham. The marriage of Campbell and Erdman was characterized by great respect and devotion and also by a



shared interest in things spiritual and artistic. They never had children and spent a great deal of time apart from each other while they pursued their own career goals; however, they kept in constant contact via phone or mail.

Campbell's choice of a much younger partner can be seen from the

position of the 7th-house ruler, Jupiter, conjunct Mercury, a very youthful planet. Mercury rules both the 1st and 10th houses, so it is evident that Campbell's marriage would be an important part of his identity and that his partner would be career-oriented. Mars, the lord of the 3rd house of music, dance, and drama, is also conjunct the 7th lord, Jupiter, giving an artistic or creative marriage partner. The 12th-house ruler, the Sun, conjunct Jupiter adds a spiritual dimension to the union.

Although the relationship of Campbell and his wife was mutually rewarding and enviable, some difficulties were present, mainly in the form of the long-distance separations they frequently experienced — and possibly from the difference in their ages. In Campbell's chart, we see many planets, malefic and benefic, in the 7th house, as well as an aspect from Saturn into that house, causing separations. Hindu astrologers consider any planet (except the Moon) placed in the 7th house to be harmful to marital happiness and to cause either delays in getting married (Campbell was

34) or separations in the marriage, as mentioned above.

### Influential Friends

Throughout Campbell's life, there were innumerable chance meetings with celebrities or people of impending celebrity of some sort. The list includes names like writer John Steinbeck, spiritual leader/philosopher Jiddu Krishnamurti, psychologist Carl Jung, musician/composer John Cage, writer/philosopher Alan Watts, poet Robert Bly, pastor/guru Swami Nikhilananda, and director/filmmaker George Lucas, among others. From the Vedic perspective, one must have a strong 11th house to have good luck with groups and friends, and Campbell's 11th was undoubtedly powerful.



The Moon in Hindu astrology is given primary importance, as is the Sun in Western astrology, and the Moon's placement indicates an area of great focus and interest. If the Moon is well placed and favorably aspected, it can also bring success to the houses it rules and the house it occupies. Campbell's Moon is lord of the 11th house in its own sign of Cancer in that house, aspected closely by the Great Benefic, Jupiter; the Cancer Moon is in Jupiter's exaltation sign and also aspected by the auspicious 5th-house lord, Saturn. So, Campbell's social life was sure to be successful and fulfilling.

The Moon in the 11th also gives "special" or unique friends, famous or "public" friends, and (with the aspects from Jupiter and Saturn) spiritual or religious friends. Saturn's influence was also seen in Campbell's friendships with people older than himself, such as European scholar and mythologist Heinrich Zimmer; Campbell studied under this man and later translated some of his writings.

### Fame

Although Joseph Campbell was the author of quite a few books on mythology — some of them accepted as classics — it wasn't until he agreed to a filmed interview with journalist Bill Moyers that he became more widely known. Unfortunately, Campbell would not live long enough to experience the popularity of the *Power of Myth* series; he died three months after it was recorded.

The kind of widespread fame (relatively speaking) that Campbell gained after his death is associated with the planet Rahu. When well placed in a chart, Rahu can bring great recognition, especially if it is associated with either the 1st or 10th house. As we have already seen, Rahu is strongly placed in Virgo in the Ascendant. The promise of fame or notoriety in Campbell's horoscope was finally fulfilled in his 40th year, during the maturity of Rahu.<sup>7</sup> This was when Campbell published, along with writer Henry Morton Robinson, the "Skeleton Key" to James Joyce's *Finnegans Wake*. Fame came on a larger scale during Campbell's Rahu dasha, with the release of the *Power of Myth* series. The series itself is a perennial favorite on PBS, and the six-volume set of videotapes, based on the series, has sold more than a million copies. (Some astrologers believe that one's chart continues to manifest even after the death of the body; Campbell's posthumous success during what would have been his entire Rahu dasha lends credence to this notion.)

Another factor contributing to Campbell's popularity and renown is the planetary war that the 10th lord of status, Mercury, wins over Jupiter, the planet of great blessings.

### Cancer

Joseph Campbell died on October 30, 1987 of esophageal cancer after undergoing laser surgery and radiation therapy. Signs of failing health were apparent in the years before the diagnosis, including weight loss accompanied by an insistent cough; when Campbell finally saw a doctor, it was too late.

In Hindu astrology, the lunar nodes, Rahu and Ketu, are associated with hard-to-diagnose or incurable diseases, such as cancer. Campbell's Rahu is



placed in the 1st house of one's overall constitution, and the 1st-house ruler, Mercury, is fallen in Pisces in the 7th house. Campbell died during his Rahu-Mercury-Venus period. This doesn't mean that every person with one of the nodes placed in the 1st house will get cancer, but in Campbell's case, it seems to have been a contributing factor. Mercury periods would always be problematic for Campbell's health because of this planet's debilitation and the numerous malefic aspects it receives, and the Venus antaradasha (subperiod of a bhukti, also called *pratyantara*) was potentially dangerous for these reasons:

Venus, as natural ruler of the throat, becomes vulnerable by being placed in the *dusthana*, or evil, 6th house of health. For Campbell, Venus is twice an indicator of the throat area: first, by natural rulership; and second, by its rulership over the 2nd house of the throat. The 2nd house also receives an aspect from Saturn, hinting at further sensitivity in the region of the throat.

### Dasha Overview

The following is a brief description of Joseph Campbell's dasha sequence from about age 8 to his death at age 83. The general character of the dasha is given, followed by important highlights of each period. (See **Table**, next page.)

#### Mercury Dasha:

Approximately age 8 to age 25. Characterized by great intellectual curiosity (Mercury) at all school levels, rigorous study, and some health problems. By age 10, Campbell had read all of the children's books in the local library and began to consume the reports of the Bureau of American Ethnology.

*Mercury-Venus:* At age 13, Campbell became sick with a serious respiratory infection (bronchitis/pneumonia) and was out of school for months. This

BISWA  
KALYAN  
FOUNDATION

YAJNAS

In Vedic Astrology  
yajnas are excellent  
to alleviate negative  
influences or to  
increase the positive  
ones coming into  
your life.



✧ BISWA KALYAN FOUNDATION ✧

YAJNAS

Yajnas are part of the remedial measures used in Vedic Astrology. All our Yajnas are performed in the purest vedic tradition, under the supervision of Pandit Jyotishi Benu Mukhopadhyay, in India near the Ganges river in West Bengal.

"The Biswa Kalyan Foundations' yajnas have produced extraordinary results in my life and for many of my clients. I would be lost in my astrology practice without them."

— James T. Braha / vedic astrologer

BISWA KALYAN FOUNDATION

210 rue Labonté, Longueuil, Québec, Canada, J4H 2P7

Email: yves@yajna.com • Web: www.yajna.com

Tel: (450) 463-3636 • Fax: (450) 463-4301 ASK FOR YVES

## Master of Myth

is the same subperiod that was active at the time of his death.

**Mercury-Sun:** Campbell's health improved (kazimi?), and he found a mentor (Sun). It was also during this period (Mercury-Sun-Venus) that the family home burned down, and his grandmother died in the fire (Sun-Mercury combustion combined with Venus as ruler of the 9th house of grandparents in the 6th house of accidents).

**Mercury-Rahu:** Campbell was voted valedictorian of his class (fame = Rahu) but also developed the mumps (Rahu in the 1st house of health along with necha Mercury).

**Ketu Dasha:** Approximately age 25 to age 32. Characterized by soul-searching and the Ketu qualities of

unusual and erratic relationships, eccentric and spiritual people, confusion, and instability. Campbell experimented with nudism, Communism, and drinking. He spent time in an alternative community, met John Steinbeck, and continued to read voraciously.

**Ketu-Venus:** Campbell had his first sexual encounter under unusual (Ketu) circumstances on a cruise ship at age 25 (the age that Venus "matures" in Vedic astrology).

**Ketu-Rahu:** Campbell had an affair with Carol Steinbeck, John Steinbeck's wife. (Ketu and Rahu on the 1st-7th axis can sometimes manifest intrigues in love relationships. Rahu brings entanglements with worldly or famous people.)

**Ketu-Jupiter:** Campbell "dropped out" and landed in an artist community in Woodstock, New York. Thus ensued a somewhat decadent period, relatively speaking. (Jupiter losing the planetary war with Mercury could contribute to a certain amount of overindulgence, especially during a Ketu dasha.)

**Ketu-Saturn:** Campbell "got serious" (Saturn) and began his teaching career at Sarah Lawrence. (Saturn rules the 6th house of daily work and, combined with Ketu, indicates a job outside of the mainstream.)

**Ketu-Mercury:** Campbell delved into self-analysis via the works of Sigmund Freud and Carl Jung. (Mercury indicates intellectual activity and rules the 1st house of the self.) Also, Campbell had minor surgery to have a polyp removed. (Here, we see the effect of the 1st-house ruler, Mercury, being fallen.)

**Venus Dasha:** Approximately age 32 to age 52. During this period, Campbell got married, continued to teach at Sarah Lawrence, encountered well-known gurus and mentors, and traveled widely.

**Venus-Venus:** During the antaradasha of Saturn, lord of Campbell's 5th house of romantic affairs, Campbell and Jean Erdman were married. Interestingly, Campbell, who dabbled in numerology, intentionally chose the fifth hour of the fifth day of the fifth month for the wedding (May 5, 1938 at 5:00 p.m.).

**Venus-Moon:** Campbell befriended many well-known individuals. Among them were Swami Nikhilananda, writer Henry Morton Robinson, writer Thomas Mann, and scholar Heinrich Zimmer. (The Moon in its own sign in the 11th house of influential people brings these great opportunities to Campbell.)

**Venus-Mars:** After much inner turmoil, Campbell registered for the draft. To his relief, he escaped because of his age (38). (Mars, as signifier of war, shows its influence here.)

**Venus-Rahu:** In 1944, Campbell was recognized by the *New York Times* for his "Skeleton Key" to James Joyce's *Finnegans Wake*. (Rahu, as signifier of fame, bears fruit during its maturity at age 40.)

**Venus-Saturn:** Campbell's classic work, *The Hero with a Thousand Faces*, was published to great acclaim. (Saturn "solidifies" Campbell's reputation as a serious scholar.)

**Venus-Mercury:** Campbell met the great psychiatrist Carl Jung at Jung's home in Switzerland. Only very special individuals were invited for personal meetings with Jung. For Campbell's

Virgo Ascendant, these two planets rule highly auspicious houses and, when in combination, produce what is known as a Raja Yoga. A Raja Yoga typically occurs when the ruler of an angular house (1st, 4th, 7th, or 10th) and the ruler of a trinal house (1st, 5th, or 9th) are either conjunct or in mutual aspect. This combination can bring great talent, success, or luck in various areas of life, depending on the planets and houses involved. In Campbell's case, Mercury and Venus do not form a classic Raja Yoga in the birth chart; however, their beneficial energies will still produce similar results during the Venus-Mercury period.

**Venus-Ketu:** In 1954, Campbell took his first trip to India as the guest of Swami Nikhilananda; he also met and spoke with Ananda Mayi-Ma, the female Indian saint, also called "the Mother" (Venus as ruler of the 9th house of long-distance travel, combined with spiritual and mystical Ketu). Also, Campbell traveled to Japan for the first time in 1955 and had his ailing ankle healed during a Japanese fire-walking ceremony (Ketu's connection with alternative healing).

**Sun Dasha:** Approximately age 52 to age 58. For Campbell, this dasha consisted of time spent apart from his wife, dealings with the government, an increase in his lecturing, more traveling, and greater focus on his career.

**Sun-Sun:** Campbell began his lecture series with the Foreign Services Institute in Washington, D.C. (The Sun as signifier of the government becomes a strong influence.)

**Sun-Rahu:** Campbell was invited to the prestigious Eranos conference, an international gathering of intellectuals and scholars; this invitation was based on his growing reputation as an important thinker and mythologist. (Again, Rahu brings fame or notoriety for Campbell.)

**Sun-Jupiter:** Campbell and his wife were separated due to conflicting career itineraries — a theme present throughout the entire Sun dasha. (Here, we see the weakened condition of Jupiter, as 7th-house lord, in tandem with the malefic Sun in the 7th house, creating a separation in the relationship.) However, during this period, Campbell was afforded the opportunity to travel back

## The Rahu dasha brought greater notoriety and the illness that led to Campbell's death.

to Japan for a conference. (The Sun, as ruler of the 12th house of travel to remote foreign countries, gets a boost from its close conjunction to the Great Benefic, Jupiter.)

**Moon Dasha:** Approximately age 58 to age 68. This dasha consisted of the completion of Campbell's major work, *The Masks of God*,<sup>8</sup> meetings with influential people, an opportunity to participate in an experimental educational center, and a widening of his circle of friends.

**Moon-Moon:** Campbell's book, *Oriental Mythology*,<sup>9</sup> was published and favorably reviewed by Campbell's friend, writer/philosopher Alan Watts. (Here, we see the influence of the Moon, as ruler of the 11th house of

influential friends and major goals — this book was the second volume in the *Masks of God* series.)

**Moon-Rahu:** Along with John Steinbeck and playwright Arthur Miller, Campbell was asked to speak at the funeral of a well-respected editor (the combination of the Moon, as 11th-house ruler of influential people, with Rahu, as indicator of fame). Also during this period, *Occidental Mythology*<sup>10</sup> — the third volume in the series — was published and well received by the critics.

**Moon-Mercury:** The final volume, *Creative Mythology*,<sup>11</sup> was published, and Campbell met scientist Buckminster Fuller.

**Mars Dasha:** Approximately age 68 to age 75. This dasha found Campbell retiring from Sarah Lawrence in his late sixties, but remaining very active and energetic in the world of scholars and on the lecture circuit as an author. He also joined forces with his wife as a regular speaker at her studio for the arts (called "The Open Eye"). Unfortunately, I was unable to uncover any

### Joseph Campbell's Dashes and Bhuktis

Sa/Mo	Mar 26, 1904	Ve/Me	Jan 28, 1952	Ra/Ra/Ra	Jan 27, 1979
Sa/Ma	Aug 1, 1905	Ve/Ke	Nov 28, 1954	Ra/Ra/Ju	Jun 24, 1979
Sa/Ra	Sep 9, 1906	Su/Su	Jan 28, 1956	Ra/Ra/Sa	Nov 3, 1979
Sa/Ju	Jul 16, 1909	Su/Mo	May 16, 1956	Ra/Ra/Ke	Apr 7, 1980
Me/Me	Jan 28, 1912	Su/Ma	Nov 15, 1956	Ra/Ra/Ve	Oct 21, 1980
Me/Ke	Jun 25, 1914	Su/Ra	Mar 23, 1957	Ra/Ra/Su	Apr 3, 1981
Me/Ve	Jun 23, 1915	Su/Ju	Feb 14, 1958	Ra/Ra/Mo	May 22, 1981
Me/Su	Apr 22, 1918	Su/Sa	Dec 4, 1958	Ra/Ju/Ju	Oct 10, 1981
Me/Mo	Feb 27, 1919	Su/Me	Nov 16, 1959	Ra/Ju/Sa	Feb 3, 1982
Me/Ma	Jul 28, 1920	Su/Ke	Sep 21, 1960	Ra/Ju/Me	Jun 22, 1982
Me/Ra	Jul 25, 1921	Su/Ve	Jan 27, 1961	Ra/Ju/Ke	Oct 24, 1982
Me/Ju	Feb 12, 1924	Mo/Mo	Jan 27, 1962	Ra/Ju/Ve	Dec 14, 1982
Me/Sa	May 20, 1926	Mo/Ma	Nov 28, 1962	Ra/Ju/Su	May 9, 1983
Ke/Ke	Jan 27, 1929	Mo/Ra	Jun 29, 1963	Ra/Ju/Mo	Jun 22, 1983
Ke/Ve	Jun 25, 1929	Mo/Ju	Dec 27, 1964	Ra/Ju/Ma	Sep 3, 1983
Ke/Su	Aug 25, 1930	Mo/Sa	Apr 28, 1966	Ra/Ju/Ra	Oct 24, 1983
Ke/Mo	Dec 31, 1930	Mo/Me	Nov 28, 1967	Ra/Sa/Sa	Mar 4, 1984
Ke/Ma	Aug 1, 1931	Mo/Ke	Apr 28, 1969	Ra/Sa/Me	Aug 16, 1984
Ke/Ra	Dec 28, 1931	Mo/Ve	Nov 27, 1969	Ra/Sa/Ke	Jan 10, 1985
Ke/Ju	Jan 15, 1933	Mo/Su	Jul 29, 1971	Ra/Sa/Ve	Mar 12, 1985
Ke/Sa	Dec 22, 1933	Ma/Ma	Jan 28, 1972	Ra/Sa/Su	Sep 1, 1985
Ke/Me	Jan 30, 1935	Ma/Ra	Jun 25, 1972	Ra/Sa/Mo	Oct 23, 1985
Ve/Ve	Jan 28, 1936	Ma/Ju	Jul 13, 1973	Ra/Sa/Ma	Jan 18, 1986
Ve/Su	May 29, 1939	Ma/Sa	Jun 19, 1974	Ra/Sa/Ra	Mar 20, 1986
Ve/Mo	May 28, 1940	Ma/Me	Jul 29, 1975	Ra/Sa/Ju	Aug 23, 1986
Ve/Ma	Jan 27, 1942	Ma/Ke	Jul 25, 1976	Ra/Me/Me	Jan 9, 1987
Ve/Ra	Mar 29, 1943	Ma/Ve	Dec 21, 1976	Ra/Me/Ke	May 21, 1987
Ve/Ju	Mar 29, 1946	Ma/Su	Feb 21, 1978	Ra/Me/Ve	Jul 14, 1987
Ve/Sa	Nov 27, 1948	Ma/Mo	Jun 28, 1978	Ra/Me/Su	Dec 16, 1987

# STAR WATCH

## FINALLY A CALENDAR WITH YOUR TRANSITS!

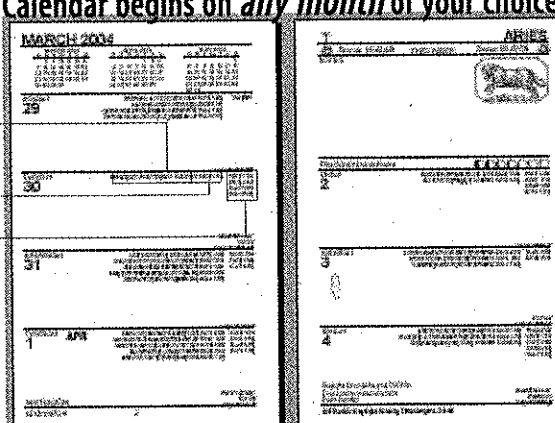
"The Star Watch calendar is a gem." Steven Forrest  
 "I think you have something fine here..." Noel Tyl  
 "The Star Watch Calendar is a boon (godsend)..." Donna Cunningham  
*You don't need to know anything about astrology to use Star Watch.*

**Calendar begins on any month of your choice.**

**TWO VERSIONS**  
With personal forecast or without forecast

**BOTH VERSIONS HAVE**  
*Your* personal transits  
~ plus ~  
Regular transits  
~ and ~  
*Your* local time

For full size samples log onto  
[StarWatchCalendar.com](http://StarWatchCalendar.com)



**Lots of room for your appointments.**  
Using your birth data, Star Watch calendar is custom made for you. It contains your personal daily astrological influences. It can begin on any month of your choosing during the year. Each 8.5 x 5.5 inch (180 pages) bound calendar/book is for one full year. Star Watch comes with a no risk, money-back full satisfaction guarantee.

To purchase *your* personal Star Watch Calendar or for more information log onto:  
**StarWatchCalendar.com \$65**

## Master of Myth

truly noteworthy events from this period. Perhaps this is because of the weakness of Campbell's Mars (in the final degree, or *gandanta* point, of Pisces).

**Rahu Dasha:** Approximately age 75 to Campbell's death at age 83. This dasha brought greater notoriety, a change in residence, more meetings with famous people (musicians Bob Dylan, Jerry Garcia), and the illness that led to Campbell's death.

**Rahu-Rahu:** An article about Joseph Campbell was published in the *New York Times Magazine*.<sup>12</sup> (Rahu in the 1st house of the self can bring great recognition during its dasha.)

**Rahu-Jupiter:** Campbell and his wife Jean moved to Hawaii (Jupiter as 4th-house ruler, combined with Rahu, as indicator of change).

**Rahu-Saturn:** Campbell was awarded the Gold Medal of Honor for

Literature from the National Arts Club. He also agreed to be interviewed by Bill Moyers for the renowned *Power of Myth* television series. (Here, we see the influence of these two planets, solidifying and preserving Campbell's reputation as a man of true greatness: Rahu = fame, Saturn = fixity.)

**Rahu-Mercury:** Campbell became ill with cancer of the esophagus, and all treatments failed. He turned daily to the *Bhagavad Gita* for solace until succumbing to his illness on October 30, 1987.

*The author expresses many thanks to Gary Gomes for his jocularly and mastery.*

### Chart Data and Source

**Joseph Campbell**, March 26, 1904; 7:25 p.m. EST; New York, NY (40°N43', 74°W00'); A: from memory; Erin Cameron quotes Campbell's mother, 1981.

### References and Notes

1. Bill Moyers, *The Power of Myth*, with Joseph Campbell, Doubleday, 1988.
2. Stephen and Robin Larsen, *A Fire in the Mind: The Life of Joseph Campbell*, Doubleday, 1991.

3. Joseph Campbell, *The Art of Reading Myths*, unpublished manuscript, c. 1943.
4. James Joyce, *Finnegans Wake*, Viking, 1947 [1939].
5. Joseph Campbell and Henry Morton Robinson, *A Skeleton Key to Finnegans Wake*, Harcourt, Brace, 1944; Penguin, 1977.
6. Joseph Campbell, *The Hero with a Thousand Faces*, Princeton University Press, 1973 [1949].
7. In Vedic astrology, each planet "matures" at a certain age. During the year of that planet's maturity, the person will strongly experience the indications of that planet in the chart, positive or negative.
8. Joseph Campbell, *The Masks of God*, Four Volumes, Viking, 1959-1968.
9. Joseph Campbell, *Oriental Mythology*, Viking, 1962.
10. Joseph Campbell, *Occidental Mythology*, Viking, 1964.
11. Joseph Campbell, *Creative Mythology*, Viking, 1968.
12. Eugene Kennedy, "Earthrise," *New York Times Magazine*, April 15, 1979.

### Bibliography

- Braha, James. *Ancient Hindu Astrology for the Modern Western Astrologer*. Hermetician Press, 1986.
- Braha, James. *The Art and Practice of Ancient Hindu Astrology*. Hermetician Press, 2001.
- Frawley, David. *Astrology of the Seers*. Lotus Press, 2000.
- Harness, Dennis. *The Psychological and Medical Aspects of Vedic Astrology*. Northwest Institute of Vedic Sciences, audiocassette, 2000.
- Levacy, William R. *Beneath a Vedic Sky*. Hay House, Inc., 1999.

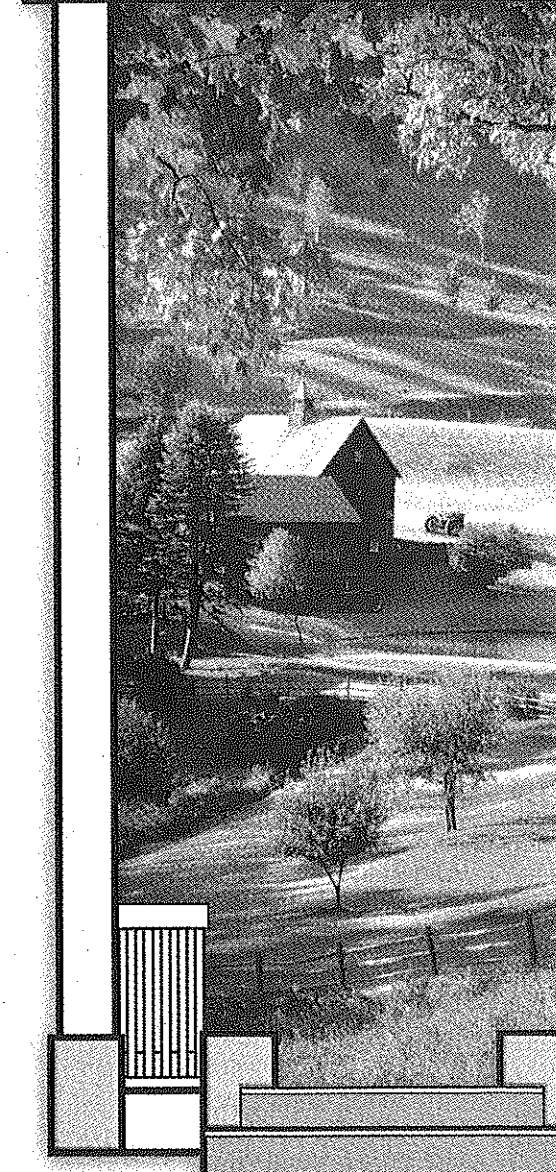
© 2004 Fred Abong - all rights reserved



**Fred Kendal Abong** is a musician and Vedic astrologer. He played bass for two popular underground bands in the early 1990s: *Throwing Muses* and the Grammy-nominated *Belly*. He continues to compose and play on his own. He is also an avid student of the Enneagram, numerology, and Meyers/Briggs personality theories. For readings, contact Fred via e-mail: [Fredabong@aol.com](mailto:Fredabong@aol.com)

# The Fourth House

by Dana Gerhardt

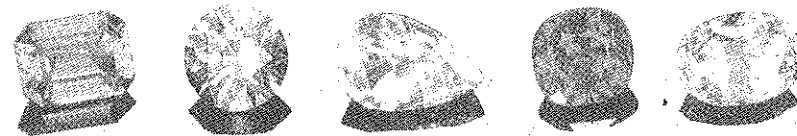


When I was growing up, at least once or twice a summer my mother would command my sister and me to toil on the big hill in our backyard, weeding the dandelions and mustard grass that flourished there. Weeds must be pulled out by the roots or they'll just grow back again. But perched on the hill with my cardboard box — while the kitchen window that held my mother's warden eye was so small and distant, and the earth below was so hard and rocky that the weeds were fixed to the ground — I took the easy way out: I yanked the damn things off at the stem.

Unhappy feelings are a lot like weeds. Neglect to take them up by the roots, and they'll just grow back again. Yet, who probes willingly into the soil where emotions grow? Finding the roots of feeling can be hard. You might learn this under the gray skies of a Saturn-Moon transit. If you're like most people, you'll try to ignore your depression. You'll put on a happy face for loved ones. You'll pretend to be caring, cool-headed, or commanding at work.

Part Four of a series

## POWERFUL NATURAL GEMSTONES For Astrology, Ayurveda & Healing



Wearing the proper gems can help alleviate the negative influences of the planets and improve your relationships, prosperity, health and happiness.

Jay Boyle is a gifted and intuitive GIA graduate gemologist with 24 years experience. He travels worldwide, often directly to the mines, to personally select vibrant, potent, natural gemstones of extraordinary quality.

Jay has provided beautiful, brilliant, astrological gemstones to thousands of satisfied customers. (See the "Testimonials" section of our website.)

- Gems can be sent to you to see and experience before you buy
- Extensive selection of superior quality gems to choose from
- Most competitive prices
- Satisfaction guaranteed

**FREE Gemstone Recommendation By Vedic Astrologer**

**JAY BOYLE COMPANY**

**800-559-5090 • [www.AstrologicalGem.com](http://www.AstrologicalGem.com)**